



Future of Automation Siemens Industrial Edge

Unrestricted

www.siemens.com/industrial-edge

Future of Automation

*...Siemens vision of future manufacturing processes
based on key technology elements e.g. Edge
Computing*

*Products and technology part of Future of Automation
are not yet available for buying, but will be part of our
portfolio in the future.*

What is Edge Computing?

Edge Computing combines both local and cloud computing

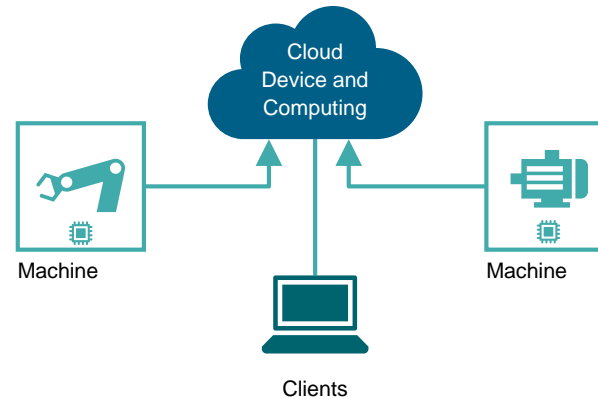
Local computing



Device Installed once –
never or seldom updated

- Data transferred per USB stick
or local network

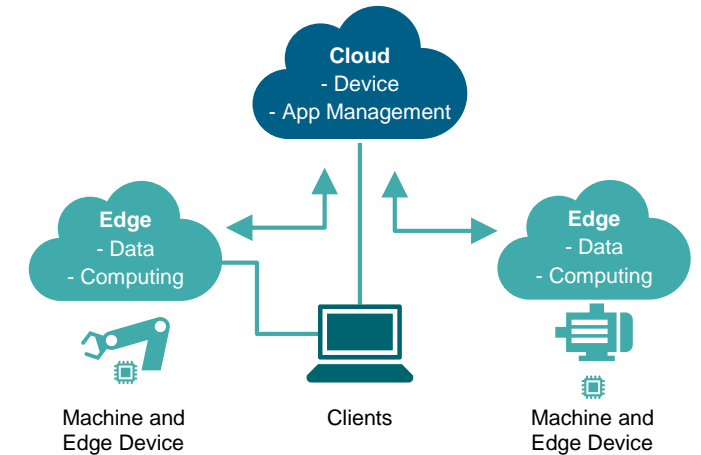
Cloud computing



App installation & deployment on-demand

- Central data and global intelligence
- Quick updates in the cloud
- Low frequency data/high latency
of decisions
- Cloud dependency

Edge computing



App installation & deployment on-demand

- Local data and global data (if wanted)
- Shift from global to local intelligence
- Quick software update cycles
for edge devices
- High volume data and low
latency decisions

Siemens Industrial Edge

Enhanced shop floor functionality with full data control



Edge Management

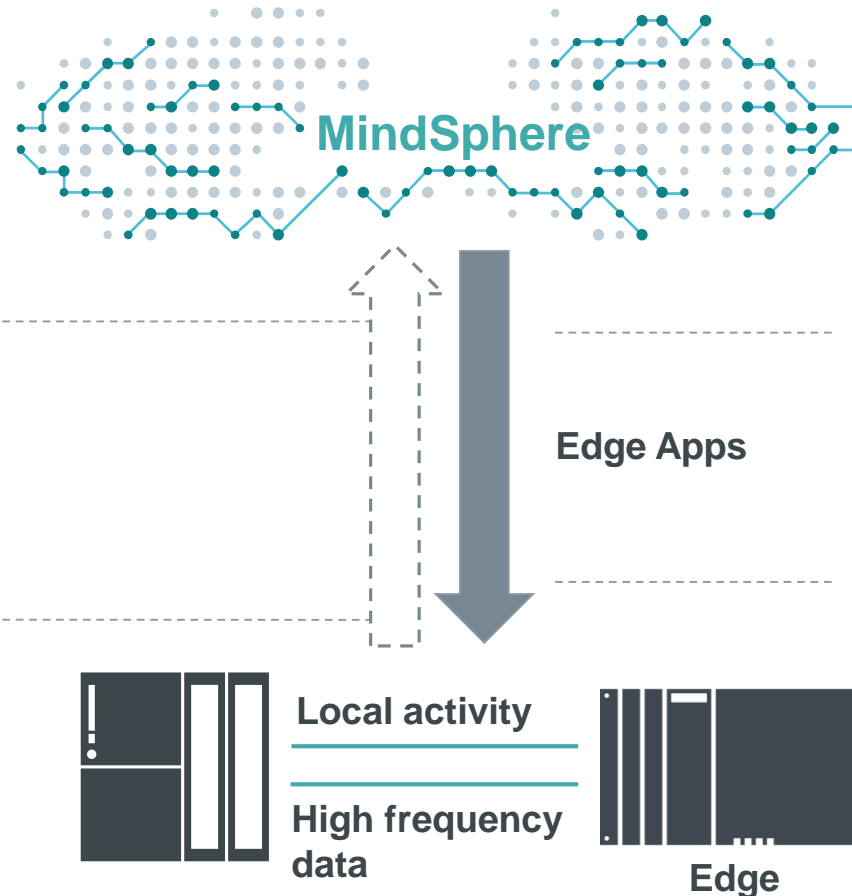
- Device Management
- Edge-App-Management
- Edge-App-Store

Edge Apps

Siemens-, Partner (OEM)-, 3rd-party- and own developed Edge-Apps

Edge-Devices

Secure and decoupled edge runtime infrastructure for edge apps



Application Examples:

Workpiece Analytics App for machine tool system

Intelligent workpiece analysis based on its digital twin

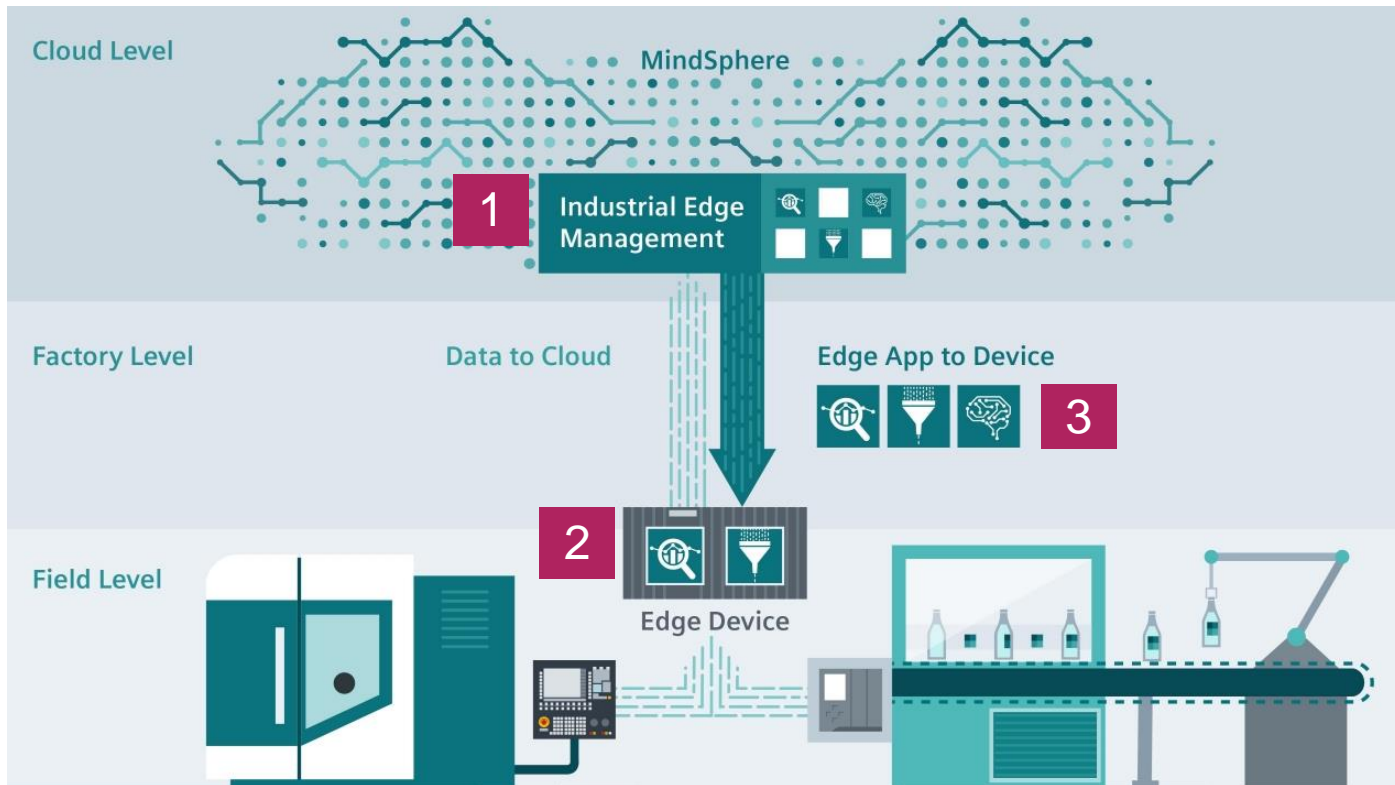
Inventory App

Inventory listing of connected automation components

Benefits

- Converting big data to smart data
- Enhanced data analysis in the shopfloor
- Full data control

Siemens Industrial Edge Concept Overview



1 Edge Management

Central infrastructure to manage Edge devices

2 Edge Devices

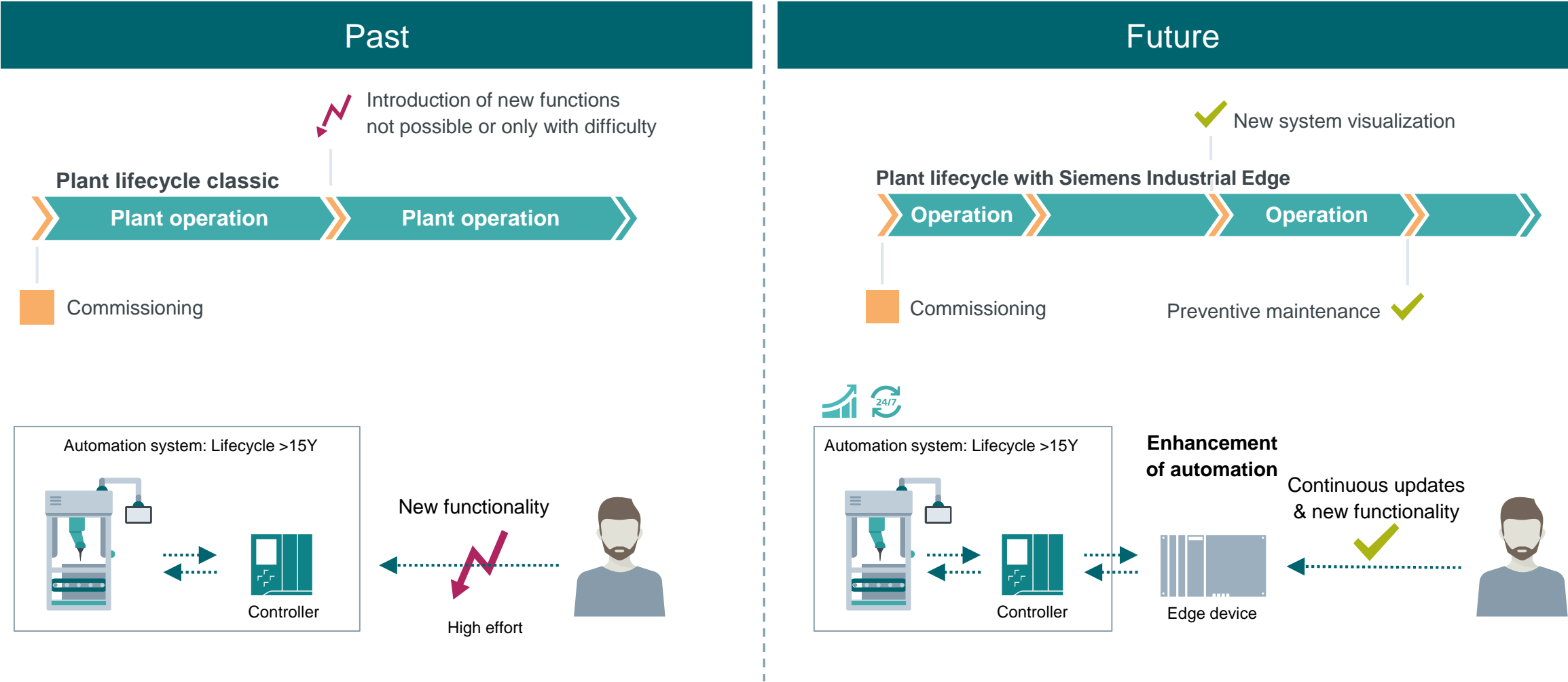
Secure, future-proof basis for running Industrial Edge applications

3 Edge Apps

Applications for intelligent data use

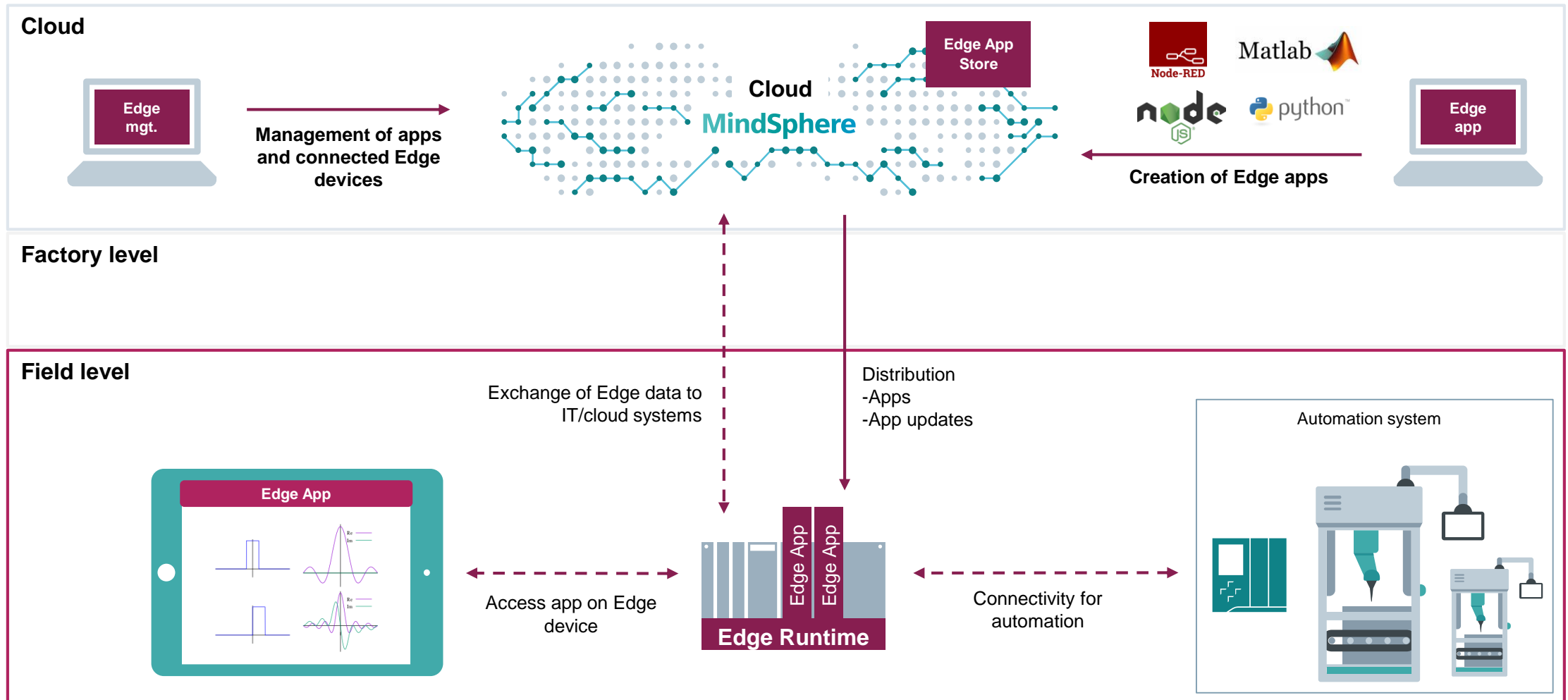
Siemens Industrial Edge - Example Application

Increasing flexibility of plant with continuous functional updates



How it works...

Reaction-free updating of functions with Siemens Industrial Edge



Using the best of the Cloud securely in manufacturing with Siemens Industrial Edge



Analysis in close to real time



Always up-to-date



Connectivity to your IT system



Plug-and-play connectivity with automation systems



Innovative solution to suit your requirements



Intelligent data pre-processing

Siemens Industrial Edge Info Material

Siemens Industrial Edge Podcast - Hannover Fair 2018

- DE: <https://www.youtube.com/watch?v=FIHlt8sNk34>
- EN: <https://www.youtube.com/watch?v=IrKtTg0To-A>

Website

www.siemens.com/industrial-edge

Thank you for your attention



Subject to changes and errors. The information given in this document only contains general descriptions and/or performance features which may not always specifically reflect those described, or which may undergo modification in the course of further development of the products. The requested performance features are binding only when they are expressly agreed upon in the concluded contract.

All product designations, product names, etc. may contain trademarks or other rights of Siemens AG, its affiliated companies or third parties. Their unauthorized use may infringe the rights of the respective owner.