



# Future of Automation Siemens Industrial Edge

Unrestricted

[www.siemens.com/industrial-edge](http://www.siemens.com/industrial-edge)

# Future of Automation

*...Siemens vision of future manufacturing processes  
based on key technology elements e.g. Edge  
Computing*

*Products and technology part of Future of Automation  
are not yet available for buying, but will be part of our  
portfolio in the future.*

# What is Edge Computing?

Edge Computing combines both local and cloud computing

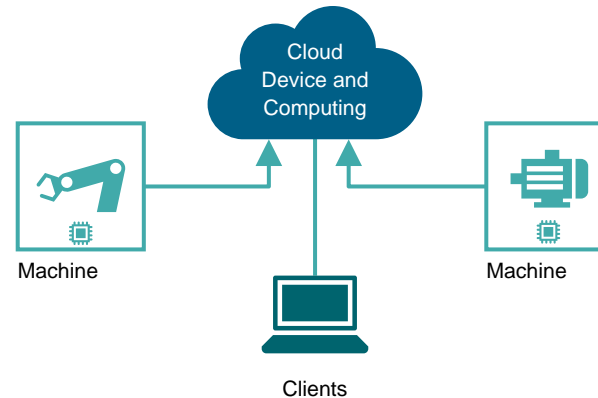
## Local computing



Device Installed once –  
never or seldom updated

- Data transferred per USB stick  
or local network

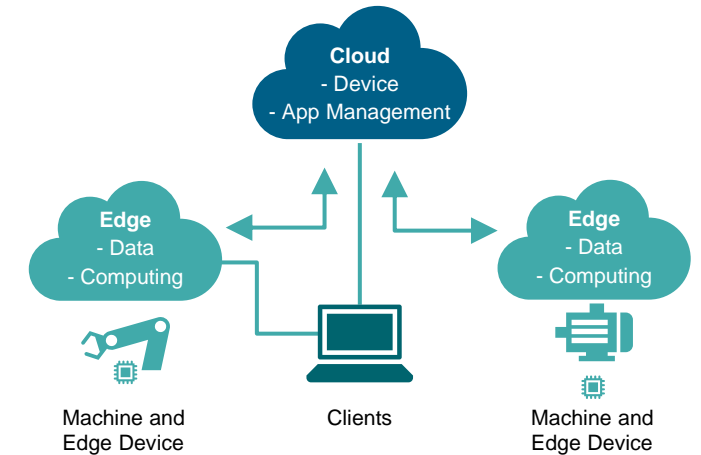
## Cloud computing



App installation & deployment on-demand

- Central data and global intelligence
- Quick updates in the cloud
- Low frequency data/high latency  
of decisions
- Cloud dependency

## Edge computing



App installation & deployment on-demand

- Local data and global data (if wanted)
- Shift from global to local intelligence
- Quick software update cycles  
for edge devices
- High volume data and low  
latency decisions

# Siemens Industrial Edge

Enhanced shop floor functionality with full data control



## Edge Management

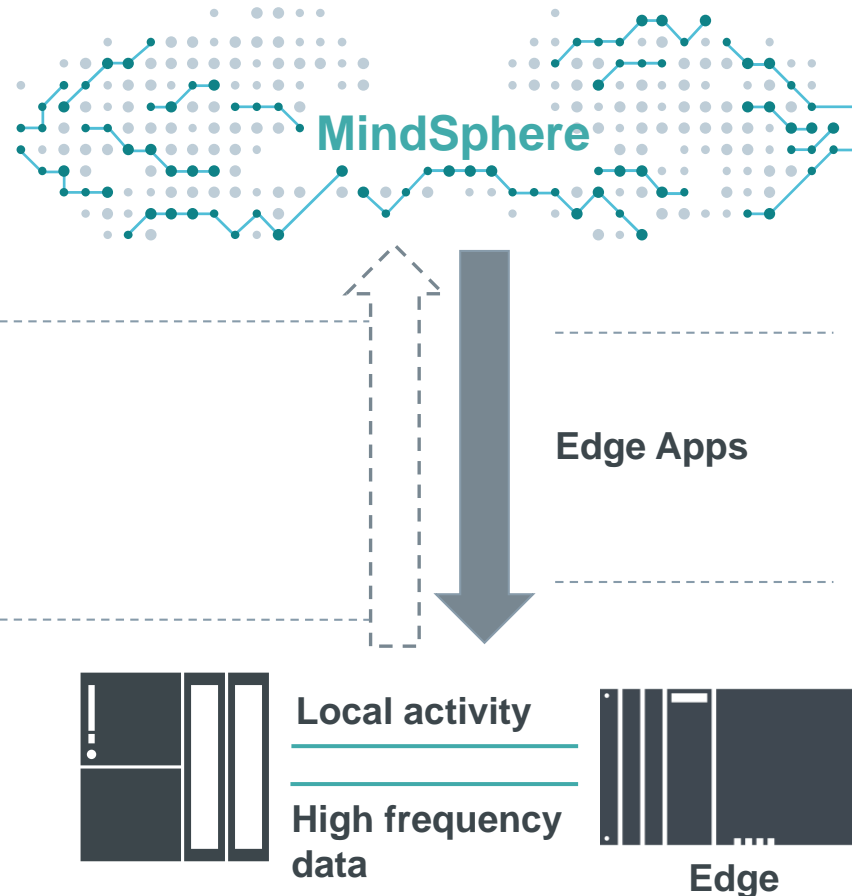
- Device Management
- Edge-App-Management
- Edge-App-Store

## Edge Apps

Siemens-, Partner (OEM)-, 3<sup>rd</sup>-party- and own developed Edge-Apps

## Edge-Devices

Secure and decoupled edge runtime infrastructure for edge apps



## Application Examples:

### Workpiece Analytics App for machine tool system

Intelligent workpiece analysis based on its digital twin

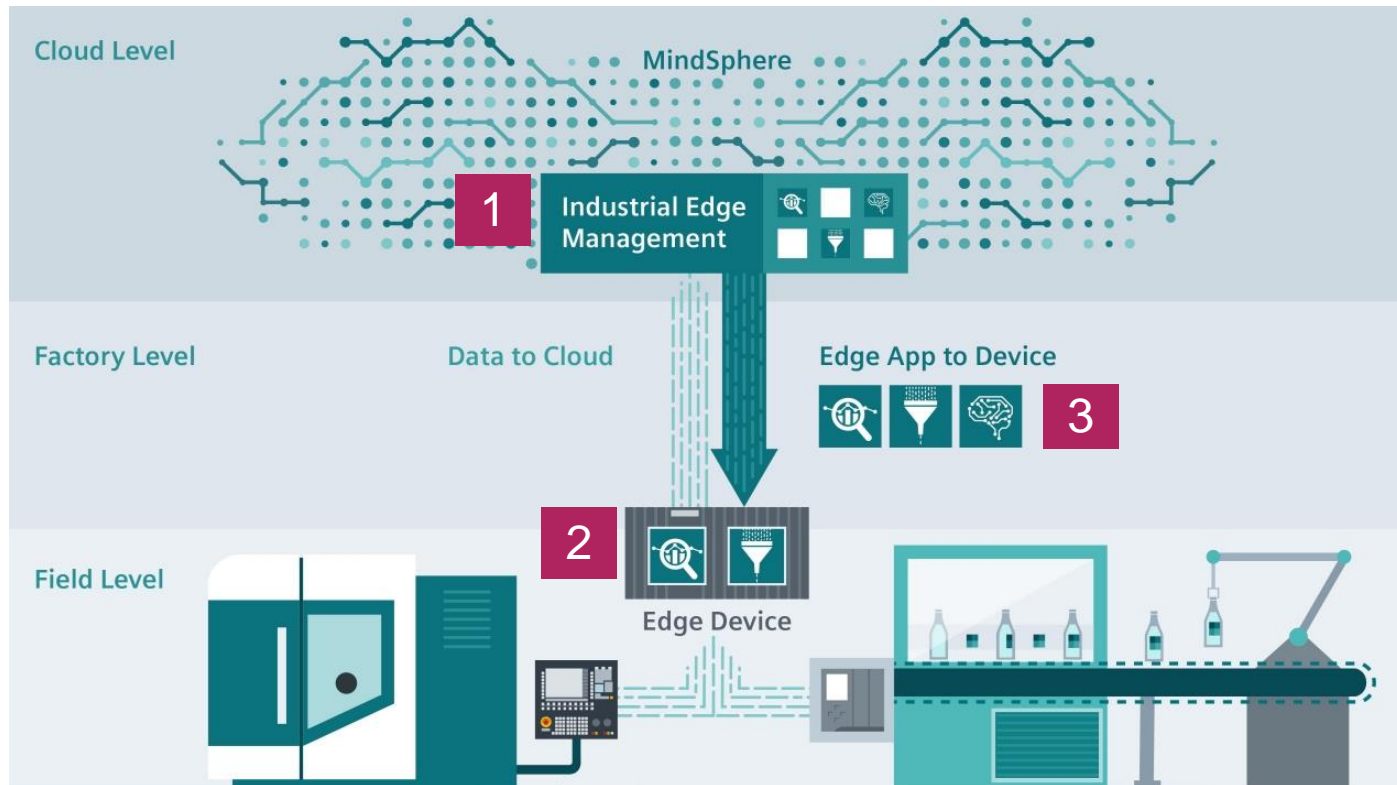
### Inventory App

Inventory listing of connected automation components

### Benefits

- Converting big data to smart data
- Enhanced data analysis in the shopfloor
- Full data control

# Siemens Industrial Edge Concept Overview



## 1 Edge Management

Central infrastructure to manage Edge devices

## 2 Edge Devices

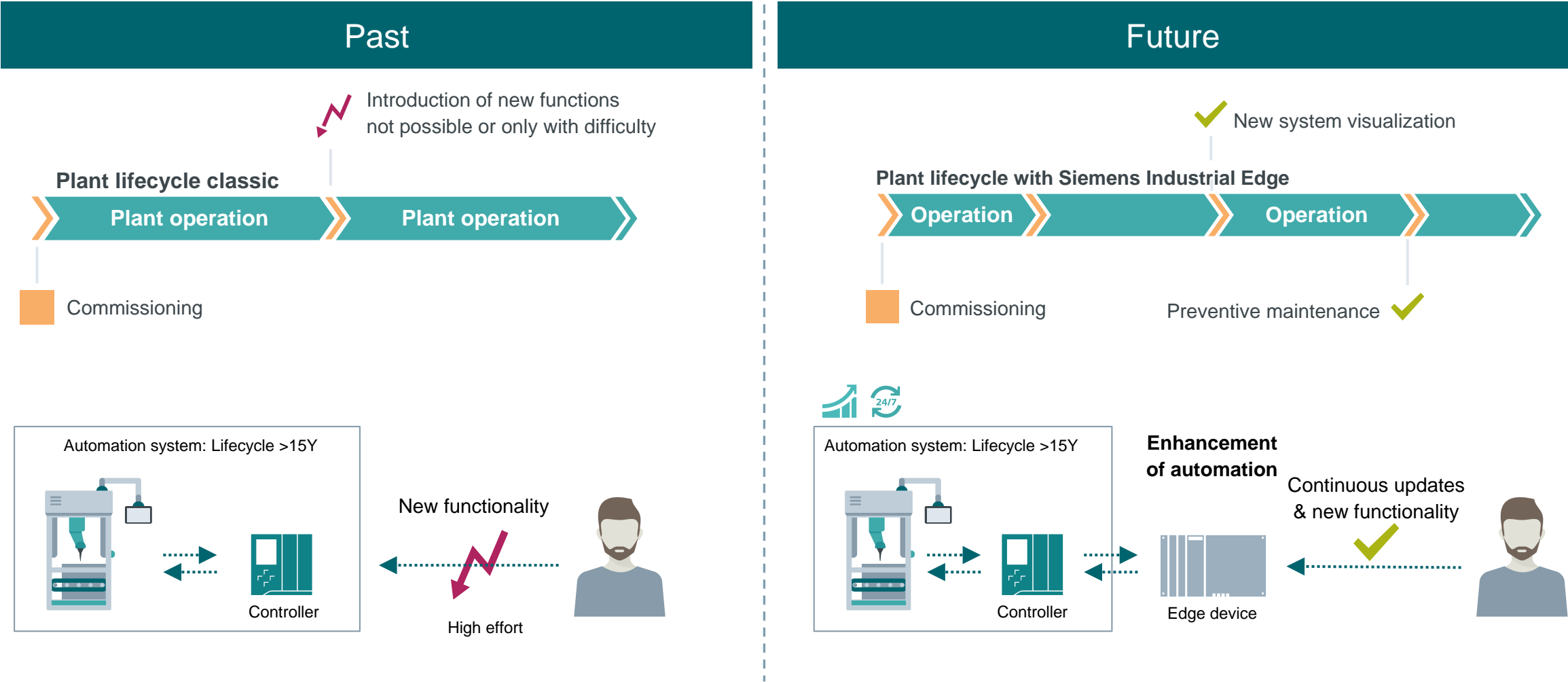
Secure, future-proof basis for running Industrial Edge applications

## 3 Edge Apps

Applications for intelligent data use

# Siemens Industrial Edge - Example Application

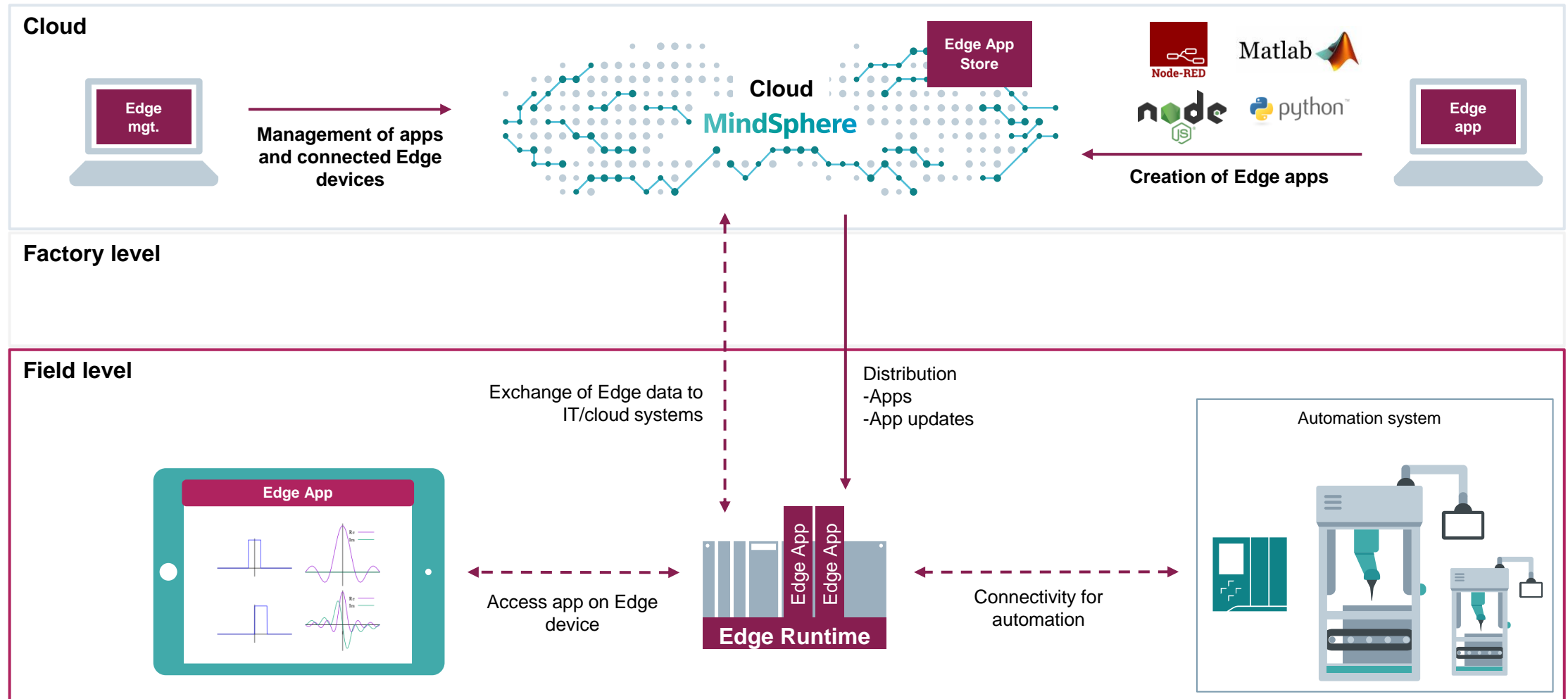
Increasing flexibility of plant with continuous functional updates





# How it works...

## Reaction-free updating of functions with Siemens Industrial Edge



# Using the best of the Cloud securely in manufacturing with Siemens Industrial Edge



**Analysis in close to real time**



**Always up-to-date**



**Connectivity to your IT system**



**Plug-and-play connectivity with automation systems**



**Innovative solution to suit your requirements**



**Intelligent data pre-processing**



# Siemens Industrial Edge Info Material

## Siemens Industrial Edge Podcast - Hannover Fair 2018

- DE: <https://www.youtube.com/watch?v=FIHlt8sNk34>
- EN: <https://www.youtube.com/watch?v=lrKtTg0To-A>

## Website

[www.siemens.com/industrial-edge](http://www.siemens.com/industrial-edge)

# Thank you for your attention



Subject to changes and errors. The information given in this document only contains general descriptions and/or performance features which may not always specifically reflect those described, or which may undergo modification in the course of further development of the products. The requested performance features are binding only when they are expressly agreed upon in the concluded contract.

All product designations, product names, etc. may contain trademarks or other rights of Siemens AG, its affiliated companies or third parties. Their unauthorized use may infringe the rights of the respective owner.